

USB2.0
StoreJet™ 2.5

User's Manual

(Version 1.2)



Table of Contents

Introduction	1
Package Contents	1
Features	2
System Requirements.....	2
Safety Precautions	3
General Use	3
Backing Up Data.....	3
Transporting	3
Power.....	3
Reminders.....	4
Product Overview	5
Installing a Hard Drive	6
Driver Installation	9
Driver Installation for Windows® 2000, XP and Vista	9
Driver Installation for Mac™ OS 9.0, or Later.....	9
Driver Installation for Linux™ Kernel 2.4, or Later	9
Connecting to a Computer	10
Disconnecting from a Computer.....	12
Removing the StoreJet™ 2.5 in Windows® 2000, XP and Vista.....	12
Removing the StoreJet™ 2.5 in Mac™ OS 9.0, or Later	12
Remove the StoreJet™ 2.5 in Linux™ Kernel 2.4, or Later	12
Formatting the Hard Drive	13
Windows® 2000/XP	13
Windows Vista™	14
Troubleshooting	18
StoreJet™ 2.5 IDE series	20
StoreJet™ 2.5 SATA series	22
Transcend Limited Warranty	23

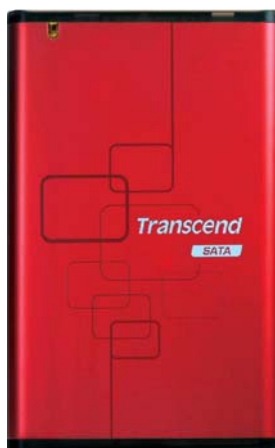
Introduction

Congratulations on purchasing Transcend's **StoreJet™ 2.5**. This tiny, Ultra-portable, Hi-Speed USB storage device is the perfect data management system for uploading, downloading, storing and transferring your vital data and information. With a huge storage capacity and Hi-Speed USB 2.0 data transfer rates, the compact **StoreJet™ 2.5** is ideal for storing and transferring your files, folders, documents, photos, music and e-work between it and any desktop, or notebook computer. In addition, the **StoreJet™ 2.5** comes with a very useful software (please see the Software User's Manual for detailed instructions) pack that can (used in Windows®) increase your productivity. The User's Manual and accompanying Software User's Guide are written to help you get the most from your new device, please read both in detail before using the **StoreJet™ 2.5**.

Package Contents

The **StoreJet™ 2.5** package includes the following items:

- **StoreJet™ 2.5**



- Mini USB to USB A-Type cable (USB Y cable)



- Quick Instruction Guide



Features

- Hi-Speed USB 2.0 compliant and USB 1.1 backwards compatible
- Easy Plug and Play installation
- Optional 2.5" Hard Disk Drive
- Ultra-Portability
- OneTouch Auto-Backup function
- Powered via the USB port. No external power or battery needed
- Hi-Speed data transfer rates up to 480Mbps per second
- Additional StoreJet Software pack: **Transcend Elite** (helps you manage your data)
- LED indicates the status of power on, data transfer activity

System Requirements

Desktop or notebook computer with a working USB port.

One of following Operating Systems (OS):

- Windows® 2000
 - Windows® XP
 - Windows® Vista
 - Mac™ OS 9.0, or later
 - Linux™ Kernel 2.4, or later
-

Safety Precautions

These usage and safety guidelines are **IMPORTANT!** Please follow them carefully.



Your StoreJet™ 2.5 is connected to a computer using a Mini USB (on the StoreJet™) to USB A-Type (on a Desktop, Notebook) cable. Please ensure that you connect the cable ends to the ports correctly.

General Use

- Carefully unpack the contents of the **StoreJet™ 2.5** package.
- During operation, avoid exposing your **StoreJet™ 2.5** to extreme temperatures above 55°C, or below 5°C.
- Do not drop your **StoreJet™ 2.5**.
- Do not allow your **StoreJet™ 2.5** to become damp or wet from water or any other liquids.
- Do not use a damp/wet cloth to wipe or clean the exterior case.
- Do not use or store your **StoreJet™ 2.5** in any of the listed environments:
 - Direct sunlight
 - Next to an air conditioner, electric heater or other heat sources
 - In a closed car that is in direct sunlight

Backing Up Data

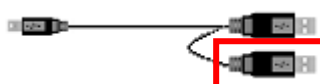
- **Transcend does NOT take any responsibility for data loss, or damage during operation.** If you decide to store data on your **StoreJet™ 2.5** we strongly advise that you regularly backup the data to a computer, or other storage medium.
- To ensure High-Speed USB 2.0 data transfer rates when using your **StoreJet™ 2.5** with a computer, please check that the computer has the relevant USB drivers. If you are unsure about how to check this, please consult the computer or motherboard User's Manual for USB driver information.

Transporting

- Do not pack your **StoreJet™ 2.5** into luggage without the proper padded support. Other items in the luggage may damage your **StoreJet™ 2.5** if it does not have the proper protection.
- Avoid squeezing your **StoreJet™ 2.5** to prevent damage to the internal HDD.
- Avoid placing objects onto your **StoreJet™ 2.5** to prevent damaging it.

Power

- The **StoreJet™ 2.5** is powered directly via a computer USB port; however, the power supplied by the USB port on some older computers is below the required 5V DC power. In this instance, please connect the other USB A-Type connector from the provided USB Y cable to a USB port on the computer, this will provide the additional power necessary to run the drive.



The other USB A-Type connector is used to provide additional power.

- Please use the Mini USB to USB A-Type cable that came with the **StoreJet™ 2.5** to connect it to a computer, and always ensure that the cable you are using is in good condition. **NEVER** use a cable that is frayed or damaged.
- Ensure nothing is resting on the USB cable and that the cable is not located where it can be tripped over or stepped on.

Reminders

Always follow the procedures in the “[Disconnecting from a Computer](#)” section to remove your **StoreJet™** from a computer.

Product Overview



Figure 1. StoreJet 2.5

- A** Screws x 2
 - B** Mini USB Port
 - C** OneTouch Auto-Backup Button
-

Installing a Hard Drive

Installing a Hard Drive

If you purchased a **StoreJet™ 2.5** that does not have a Hard Disk Drive already installed, please read this section, otherwise you can skip to the “[Driver Installation](#)” section.

1. Open the **StoreJet™ 2.5** by removing the two screws from either side of the top cover, as indicated in the diagram.



Figure 2. Remove the screws from the top cover

2. Remove the cover revealing a control board adapter; this converts the IDE/SATA interface connector of the hard drive to a Mini USB 2.0 interface. Slide out the control board.

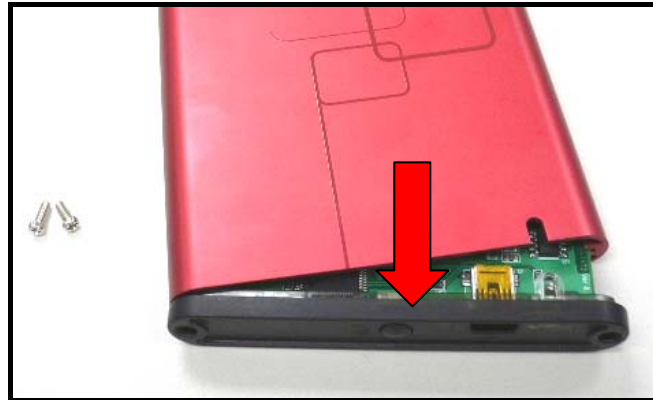


Figure 3. Remove the top cover revealing the IDE/SATA adapter

3. Carefully line up and plug in the IDE/SATA connector on the control board to the hard drive. Do **NOT** force the IDE/SATA connector into the hard drive and do **NOT** insert the connector at an angle, otherwise you may damage it.



Figure 4. Connect the hard drive to the IDE/SATA adapter

4. Carefully reinsert the IDE/SATA adapter and its connected 2.5" hard drive into the **StoreJet™ 2.5** and reattach the screws to the top cover.

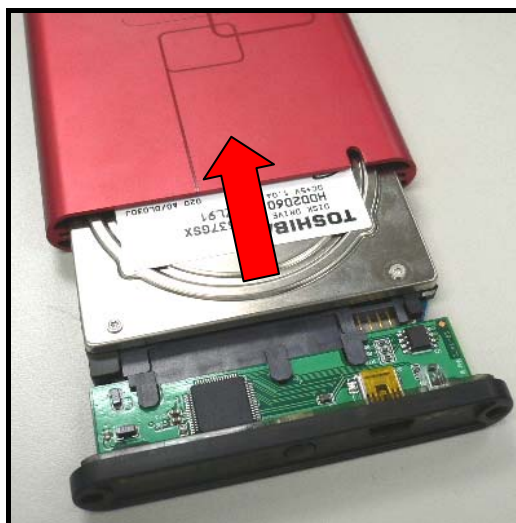


Figure 5. Reinsert the adapter plus drive and reattach the screws

Driver Installation

Driver Installation for Windows® 2000, XP and Vista

No drivers are required. These Windows® Operating Systems have built-in drivers to support the **StoreJet™ 2.5**. Plug your **StoreJet™** into an available USB port and Windows will install the necessary files. A new **Local Disk** drive with a newly assigned drive letter representing the **StoreJet™ 2.5** will appear in the **My Computer** window.

Driver Installation for Mac™ OS 9.0, or Later

No drivers are required. Plug your **StoreJet™ 2.5** into an available USB port and your computer will automatically detect it.

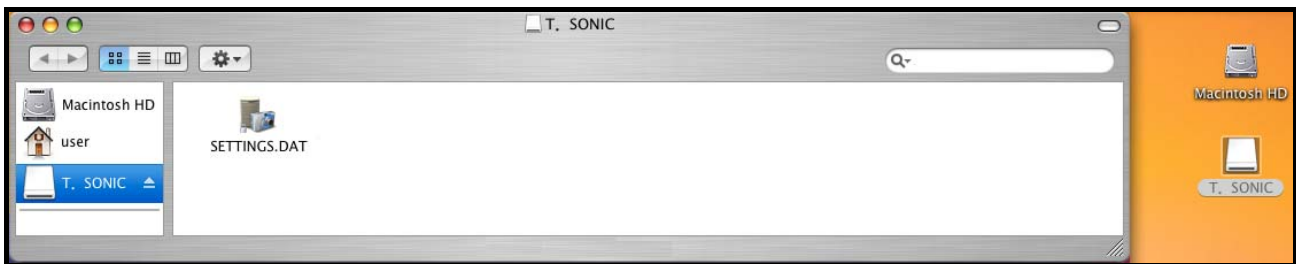


Figure 6. Mac Driver Installation

Driver Installation for Linux™ Kernel 2.4, or Later

No drivers are required. Plug your **StoreJet™ 2.5** into a USB port and mount it.

1. First create a directory for the **StoreJet™ 2.5**.

Example: `mkdir /mnt/Storejet`

2. Then, mount the **StoreJet™ 2.5**.

Example: `mount -a -t msdos /dev/sda1 /mnt/Storejet`

Connecting to a Computer

If you want to use the **StoreJet™ 2.5** as an External Hard Disk Drive to upload/download data to, or from your computer you will need to connect it to a USB port on the computer using the provided .

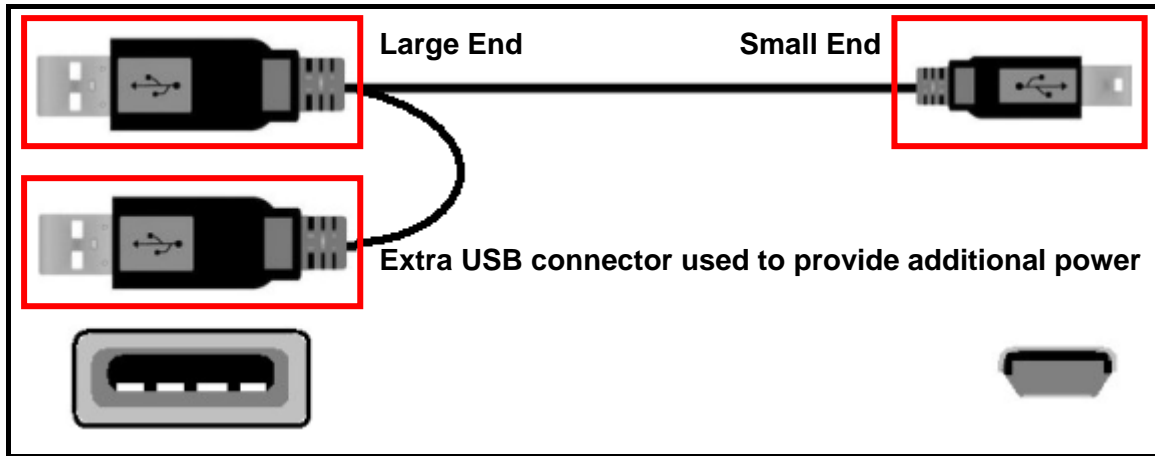


Figure 7. Mini USB to USB A-Type Cable (USB Y cable)

1. Plug the small end of the USB Y cable into the Mini USB port on the **StoreJet™ 2.5**.
 2. Plug the large end of the cable into an available USB port on your desktop, or notebook computer.
- * On some older computers, the power supplied by the USB port is below the required 5V DC power. In this instance, please connect the other USB A-Type connector from the provided USB Y cable to another USB port on the computer. This will provide the additional power necessary to run the drive.

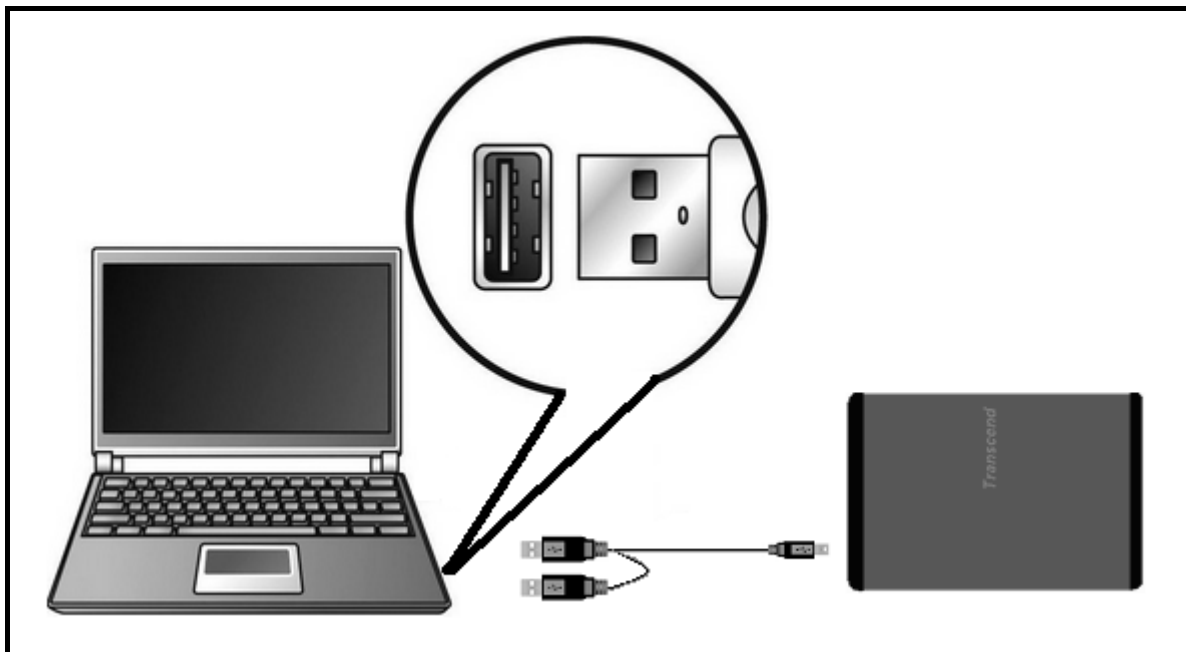



Figure 8. Connecting to a Computer

3. When the **StoreJet™ 2.5** is successfully connected to a computer the **StoreJet™**'s Power LED will light up, a new **Local Disk** drive with a newly assigned drive letter will appear in the **My Computer** window and a Hardware  icon will appear on the Windows System Tray. The **StoreJet™ 2.5**'s internal hard drive comes formatted for FAT32.

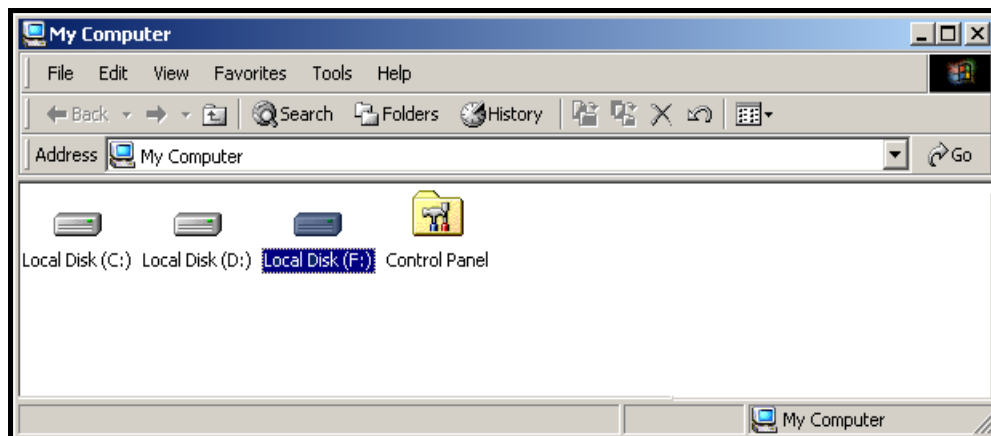


Figure 9. *F: is an example drive letter, the letter in your "My Computer" window may differ

4. At this stage the **StoreJet™ 2.5** is a **Peripheral** device and is powered by the computer's USB port. You can use the **StoreJet™ 2.5** as an external hard drive in conjunction with your computer to upload/download data. You can download data to the **StoreJet™ 2.5** simply by dragging and dropping files, or folders onto the **Local Disk** drive letter that represents the **StoreJet™ 2.5**.
5. If you have setup the bundled **Transcend Elite** you can press the **StoreJet™ 2.5**'s OneTouch **"Backup Button"** once to Backup your data.



Figure 10. OneTouch Auto-Backup Button

6. Please be advised, if you are using the **StoreJet™ 2.5** with a notebook computer, it is better to run the notebook using AC power. The reason for this is that the notebook's battery will run out of power more quickly because the **StoreJet™ 2.5** needs to draw power from the USB port.

Disconnecting from a Computer



NEVER disconnect the StoreJet™ from a Computer when its LED is flashing.

Removing the StoreJet™ 2.5 in Windows® 2000, XP and Vista


1. Select the **Hardware**  icon on the system tray.
2. The **Safely Remove Hardware** pop-up window will appear. Select it to continue.



Figure 11. Safely Remove Hardware

3. A window will appear stating, “The ‘USB Mass Storage Device’ device can now be safely removed from the system.”



Figure 12. Safe to Remove Hardware



WARNING! To prevent data loss, always use this procedure to remove the StoreJet™ from Windows® 2000, XP and Vista.

Removing the StoreJet™ 2.5 in Mac™ OS 9.0, or Later

Drag and drop the Disk icon that represents your **StoreJet™ 2.5** into the trashcan. Then unplug your **StoreJet™ 2.5** from the USB port.

Removing the StoreJet™ 2.5 in Linux™ Kernel 2.4, or Later

Execute `umount /mnt/Storejet` to un-mount the device. Then unplug your **StoreJet™ 2.5** from the USB port.

Formatting the Hard Drive

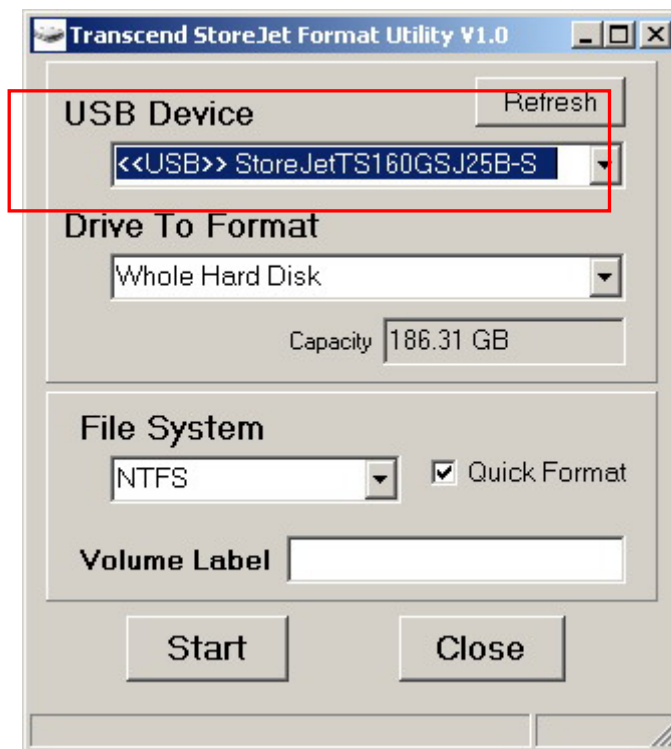


WARNING! Formatting the disk will erase all of the data on your StoreJet 25.

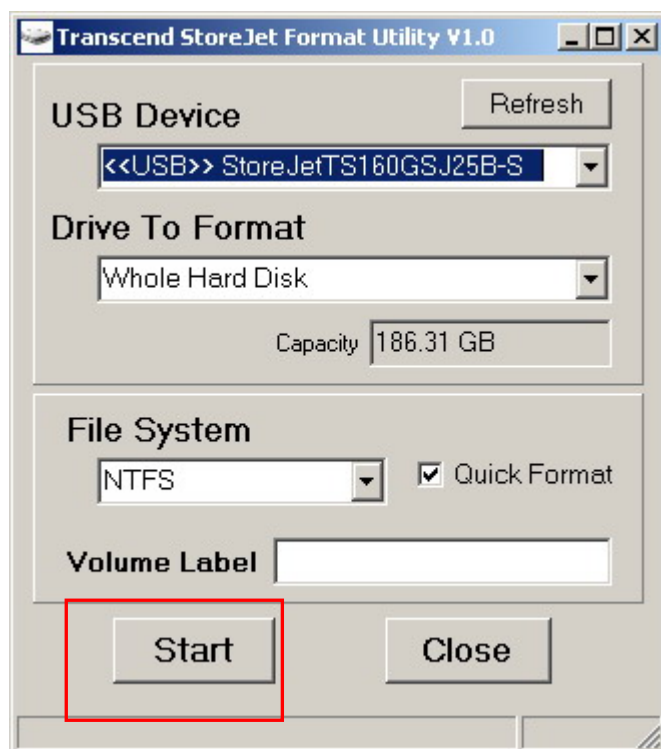
You must have Administrator Rights to format in Windows 2000, XP, or Vista.

Windows® 2000/XP

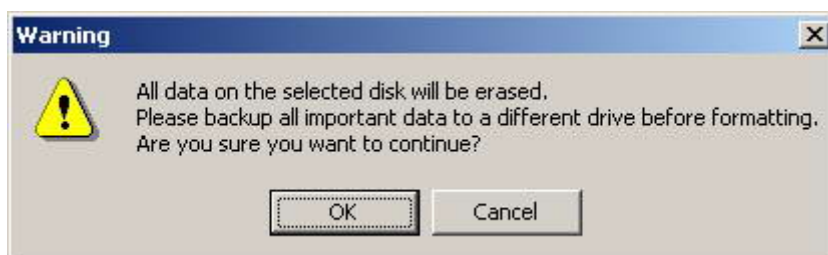
1. Download the StoreJet Format Utility from Transcend's online Download Center at <http://www.transcendusa.com/Support/DLCenter/index.asp> (the software can be located by selecting "Storage Devices -> StoreJet Drives -> any StoreJet product -> any StoreJet model")
2. When the download is complete, extract the downloaded ZIP file to your computer's hard drive (not the StoreJet 25) and run the StoreJetFormatter.exe application.
3. Plug the StoreJet 25 into an available USB port on a Windows® 2000/XP computer.
4. **Unplug all other USB storage devices from your computer.** This is to prevent accidental format of a different USB drive.
5. In the StoreJet Format Utility window, click the "Refresh" button.
6. The program will automatically detect the StoreJet 25 drive.



7. Press "Start".



8. A confirmation window will appear. Press OK to begin formatting the drive.



9. The format process may take a few minutes. When complete, an "O.K." message will appear in the bottom right hand corner of the window.



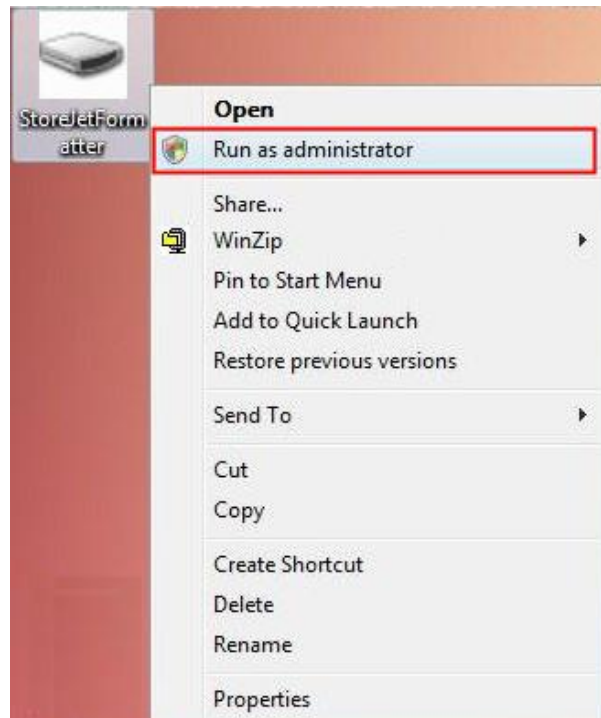
10. Click the "Close" button to finish and exit.

Windows Vista™

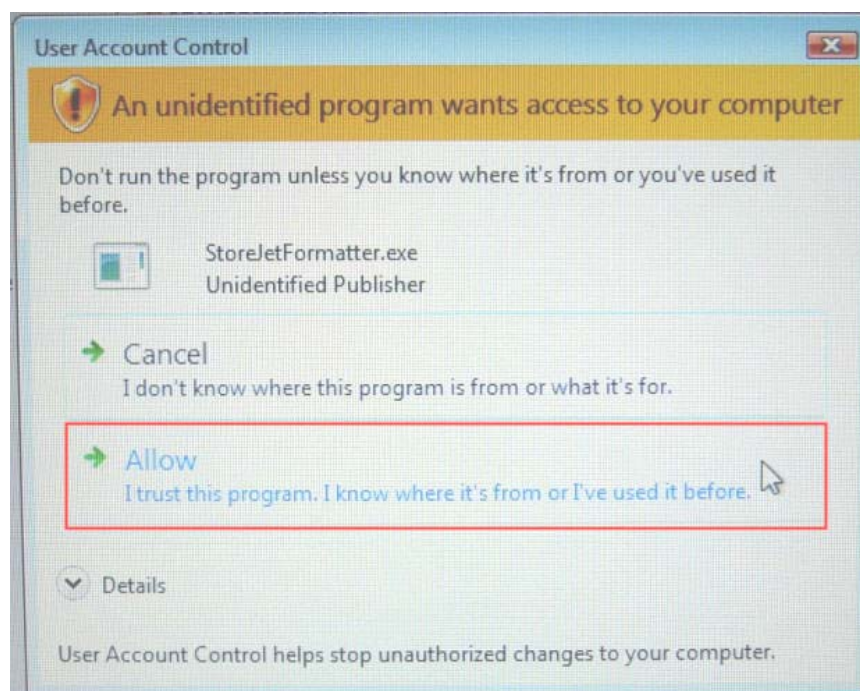
1. Download the StoreJet Format Utility from Transcend's online Download Center at <http://www.transcendusa.com/Support/DLCenter/index.asp> (the software can be located by selecting "Storage Devices -> StoreJet Drives -> any StoreJet product -> any StoreJet model")
2. When the download is complete, extract the downloaded ZIP file to your computer's hard drive (not the StoreJet 25).
3. Plug the StoreJet 25 into an available USB port on your Windows Vista™ computer.
4. **Unplug all other USB storage devices from your computer.** This is to prevent accidental format of a

different USB drive.

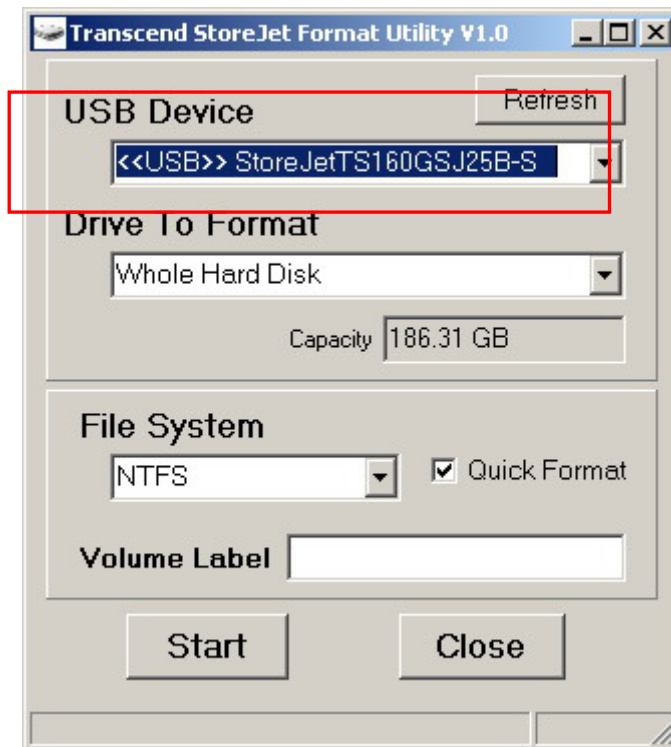
5. Right-click “**StoreJetFormatter.exe**” and select “Run as Administrator.”



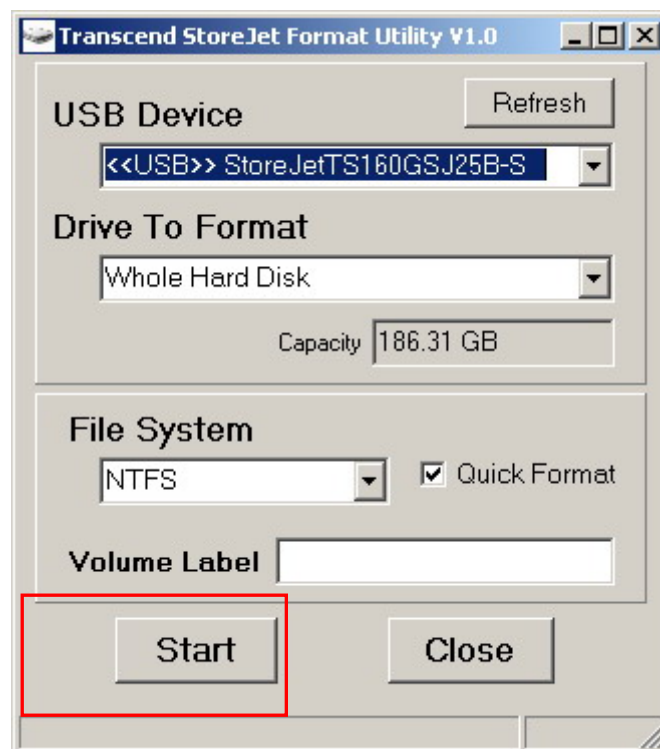
6. The User Account Control window will appear. Select “**Allow**” to continue.



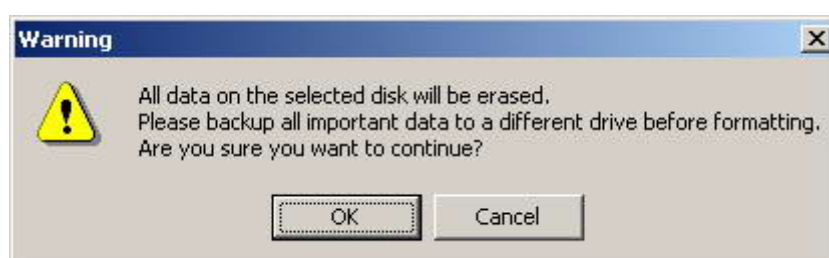
7. In the StoreJet Format Utility window, click the “Refresh” button.
8. The program will automatically detect the StoreJet 25 drive.



9. Press **“Start”**.



10. A confirmation window will appear. Press OK to begin formatting the drive.



11. The format process may take a few minutes. When complete, an “**O.K.**” message will appear in the bottom right-hand corner of the window.

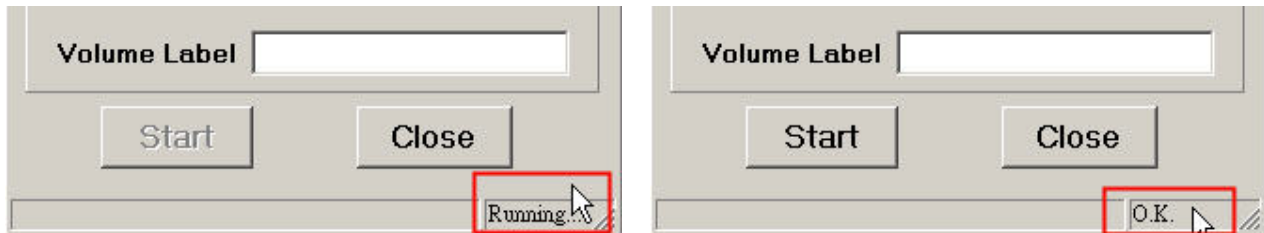


Figure 15: Format Complete

12. Click the “**Close**” button to finish and exit.
-

Troubleshooting

If a problem occurs with your **StoreJet™ 2.5**, please first check the information listed below before taking your **StoreJet™ 2.5** for repair. If you are unable to solve a problem from the following hints, please consult your dealer, service center, or local Transcend branch office. We also have FAQ and Support services on our websites.

Operating system cannot detect the StoreJet™ 2.5

Check the following:

1. Is your **StoreJet™ 2.5** properly connected to the USB port? If not, unplug it and plug it in again. If it is properly connected, try using another available USB port.
2. Are you using the USB cable that came in the **StoreJet™ 2.5** pack? If not, try using the Transcend USB cable to connect the **StoreJet™** to the computer.
3. The **StoreJet™ 2.5** is powered directly via a computer USB port; however, the power supplied by the USB port on some older computers is below the required 5V DC power. In this instance, please connect the other USB A-Type connector from the USB Y cable to a USB port on the computer. This will provide the additional power necessary to run the drive.
4. Is your **StoreJet™ 2.5** connected to the Mac™ keyboard? If yes, unplug it and plug it into an available USB port on your Mac™ Desktop.
5. Is the USB port enabled? If not, refer to the user's manual of your computer (or motherboard) to enable it.

My computer does not recognize the StoreJet™ 2.5

1. A single USB port may not provide enough power for the **StoreJet™ 2.5** to function. Make sure you plug **both** large ends of the USB cable directly into your computer's USB ports.
2. Avoid using a USB HUB to connect the **StoreJet™ 2.5**.



Cannot Power ON

Check the following:

1. Check that your **StoreJet™ 2.5** is properly connected to the USB port on the computer.
2. Check that the USB port is working properly. If not, try using an alternative USB port.

Cannot back up my Mac™

The **StoreJet™ 2.5**'s internal hard drive comes formatted for FAT32. If you want to backup a Mac computer you will need to format the drive for HFS+ using the Mac Disk Utility.

Cannot detect the StoreJet™ 2.5 in Linux

The StoreJet™ 2.5's internal hard drive comes formatted for FAT32. Linux CANNOT support the NTFS file system, please reformat the hard drive to the FAT32 file system.

StoreJet™ 2.5 IDE series

Specifications

• Size (L x W x H):	129 mm x 79.9 mm x 13 mm
• Weight:	88g (without hard drive)
• Storage Media:	2.5-inch IDE Hard Disk Drive
• Power Supply:	5V DC supplied from the USB port(s)
• Max. Transfer Speeds:	480Mbps per second
• Operating Temperature:	5°C (41°F) to 55°C (131°F)
• Certificates:	CE, FCC, BSMI
• Warranty:	2-years

Ordering Information

<i>Device Description</i>	<i>Memory Size</i>	<i>Transcend P/N</i>
StoreJet™ 2.5 Silver	0GB	TS0GSJ25S
StoreJet™ 2.5 Red	0GB	TS0GSJ25R

StoreJet™ 2.5 SATA series Specifications

● Size (L x W x H):	129 mm x 79.9 mm x 13 mm
● Weight:	186g (with hard drive)
● Storage Media:	2.5-inch SATA Hard Disk Drive
● Power Supply:	5V DC supplied from the USB port(s)
● Max. Transfer Speeds:	480Mbps per second
● Operating Temperature:	5°C (41°F) to 55°C (131°F)
● Certificates:	CE, FCC, BSMI
● Warranty:	2-years

Ordering Information

<i>Device Description</i>	<i>Memory Size</i>	<i>Transcend P/N</i>
StoreJet™ 2.5 SATA Silver	0GB	TS0GSJ25S-S
StoreJet™ 2.5 SATA Blue	0GB	TS0GSJ25B-S
StoreJet™ 2.5 SATA Red	0GB	TS0GSJ25R-S
StoreJet™ 2.5 SATA 160GB Blue	160GB	TS160GSJ25B-S
StoreJet™ 2.5 SATA 250GB Silver	250GB	TS250GSJ25S-S

Transcend Limited Warranty

“Above and Beyond” is the standard we set ourselves for customer service at Transcend. We consistently position ourselves to be significantly above the industry norm, which is all part of our commitment to Customer Satisfaction.

Please do not break or remove the warranty sticker on your Transcend products, as this will void your product warranty.

All Transcend information, Inc. (Transcend) products are warranted and tested to be free from defects in material and workmanship and to conform to the published specifications. During the warranty period should your Transcend **StoreJet™ 2.5** fail under normal use in the recommended environment due to improper workmanship or materials, Transcend will repair the product or replace it with a comparable one. This warranty is subject to the conditions and limitations set forth herein.

Duration of Warranty: The Transcend **StoreJet™ 2.5** is covered by this warranty for a period of two (2) years from the date of purchase. Proof of purchase including the date of purchase is required to collect on the warranty. Transcend will inspect the product and decide whether to repair or replace it. Transcend reserves the right to provide a functional equivalent product, or a refurbished replacement product.

Limitations: This warranty does not apply to product failure caused by accidents, abuse, mishandling, improper installation, alteration, acts of nature, improper usage, or problems with electrical power. In addition, opening or tampering with the product casing, or any physical damage, abuse or alteration to the product's surface, including all warranty or quality stickers, product serial or electronic numbers will also void the product warranty. Transcend is not responsible for recovering any data lost due to the failure of a hard drive device. Transcend's **StoreJet™ 2.5** must be used with devices that conform to the recommended industry standards. Transcend will not be liable for damages resulting from a third party device that causes the Transcend **StoreJet™ 2.5** to fail. Transcend shall in no event be liable for any consequential, indirect, or incidental damages, lost profits, lost business investments, lost goodwill, or interference with business relationships as a result of lost data. Transcend is also not responsible for damage or failure of any third party equipment, even if Transcend has been advised of the possibility. This limitation does not apply to the extent that it is illegal or unenforceable under applicable law.

Disclaimer: The foregoing limited warranty is exclusive. There are no other warranties, including any implied warranty of merchantability or fitness for a particular purpose. This warranty is not affected in any part by Transcend providing technical support or advice.

Online Registration: To expedite the warranty service, please register your Transcend Product within 30 days of purchase.

Register online at <http://www.transcendusa.com/registration>

* The specifications mentioned above are subject to change without notice.



Transcend Information, Inc.

www.transcendusa.com

*The Transcend logo is a registered trademark of Transcend Information, Inc.

*All logos and marks are trademarks of their respective companies.